

4.0 Appointment Four - *Final Delivery*



All Atlantis® Conus Abutment, overdenture are delivered with an mandatory Atlantis® Insertion Guide – for easier insertion

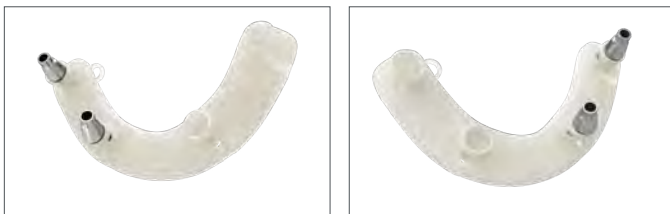
In order to get the corresponding abutment into the correct position, the Atlantis Conus Abutment include two new features: a “notch” and a “dimple” on the core surface.

- The notch acts a rotational key to the Atlantis Insertion Guide.
- The dimple works with a sight window in the guide as a visual confirmation that the abutment has been placed in the correct tooth position.



Place a Conus abutment into the guide and turn it until it sinks or “locks” into the correct position. Once the abutment is keyed into the guide, then check if the dimple on the abutment is aligned with the window in the guide. If the dimple is visible in the window, the abutment is properly placed.

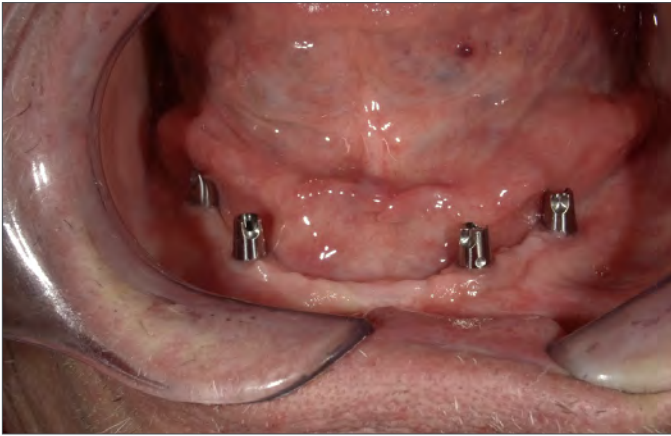
If two abutments get swapped, or an abutment is improperly rotated, the dimples won’t appear in the guide windows.



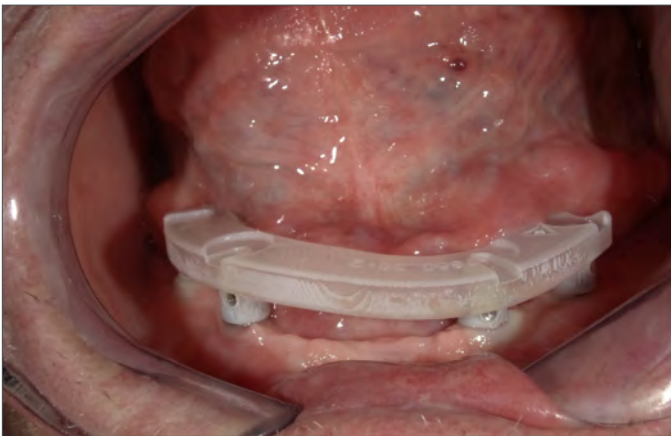
In some cases, it may be difficult or impossible to use the guide to place all abutments simultaneously due to non-parallel implant installation. In this case it may be easier to use the guide to place one or two abutments at a time, starting with the abutments that have the largest implant angle correction.



One at a time, replace each healing abutment with an Atlantis Conus abutment.



Shown are all four abutments placed prior to insertion guide verification and screw tightening.

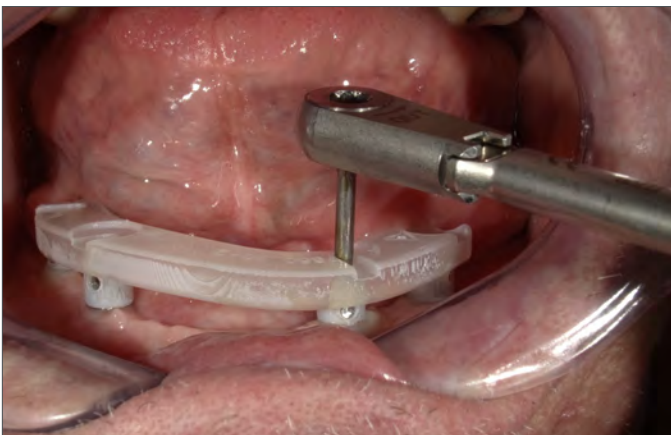


The insertion guide is used to confirm the correct orientation of all Atlantis Conus Abutments.

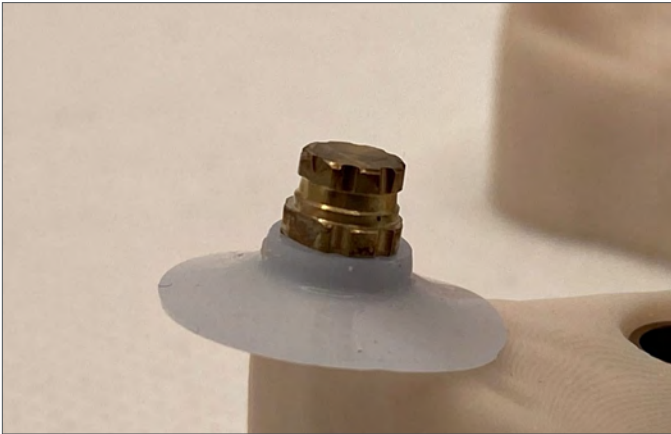


Tighten the abutment screw with light finger force. For the final tightening of the abutment screw use the appropriate recommended torque device per the implant manufacturer's specifications.

For more information regarding the Atlantis Insertion Guide, refer to: Handling procedure for Atlantis Abutment and/or Instruction for use.



Once placement is correct use the guide to torque final placement screws.



Sterilize the prefabricated SynCone caps with retention, according to the instructions for use.

Place the caps on the abutments by applying firm pressure as equal as possible. It is a best practice to do this on the model outside of the patient's mouth. Ensure the sleeve is all the way down to the base of the cap with the larger portion of the sleeve facing down. Then place the silicone sleeves to mask the undercuts.

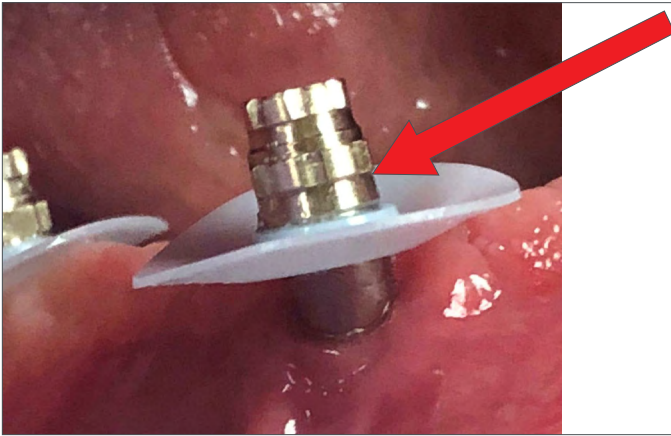


Remember to "Gap the Cap".

It is absolutely critical to have this 1mm space, no acrylic should meet this portion of the sleeve. It's purpose is to control retention.



Use the polymerization sleeve to ensure that 1 mm of the margin of the SynCone cap is exposed and not covered with acrylic.

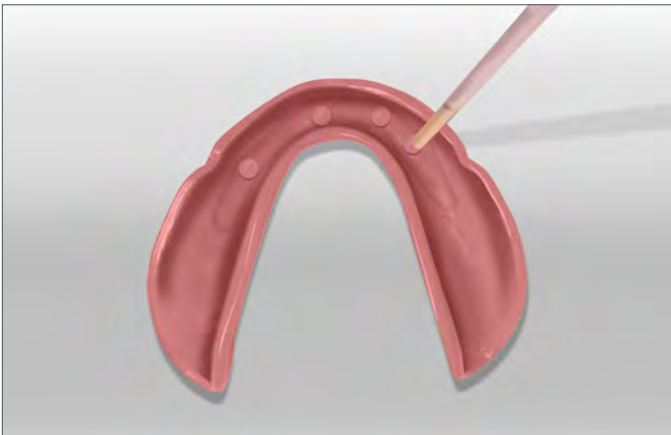


Evaluate placement of the sleeve. The sleeve should be placed at this height.

The placement in the photo shown is **incorrect**.



The placement in the photo shown is **correct**.



Dentsply Sirona recommends the following pick-up materials for placing attachments for removable overdentures.

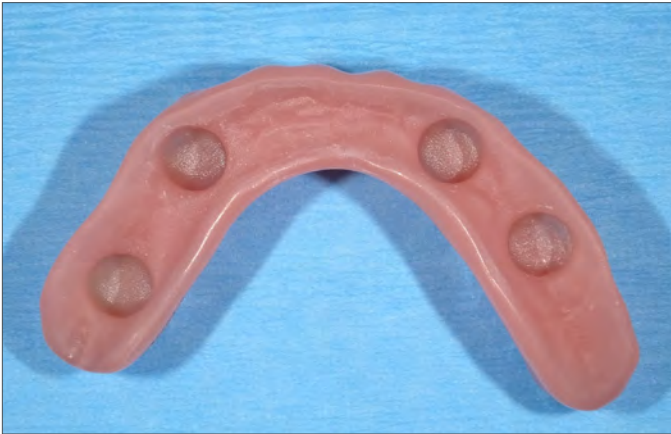
- EZ PickUp™ by Sterngold Dental†
- Quick Up® by Voco†
- Chairside® Attachment Processing Material by Zest†

†EZ PickUp™ by Sterngold Dental, Quick Up® by Voco and Chairside® Attachment Processing Material by Zest are not registered trademarks of Dentsply Sirona.



Apply pick-up material to prosthesis.

(The process shown utilizes Quick Up® by Voco. Follow the manufacturer's instructions for the validated pick-up material.)



Let air dry for 30 seconds.



Load prosthesis with pick-up material.



Fill each reservoir about $\frac{2}{3}$ full.



Seat restoration. Have patient lightly close. Self Cure - 2.5 minutes.



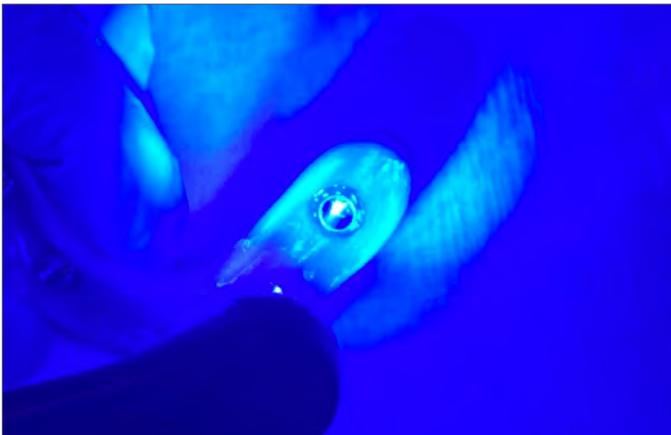
Remove restoration. Poly Sleeves easily peel away.



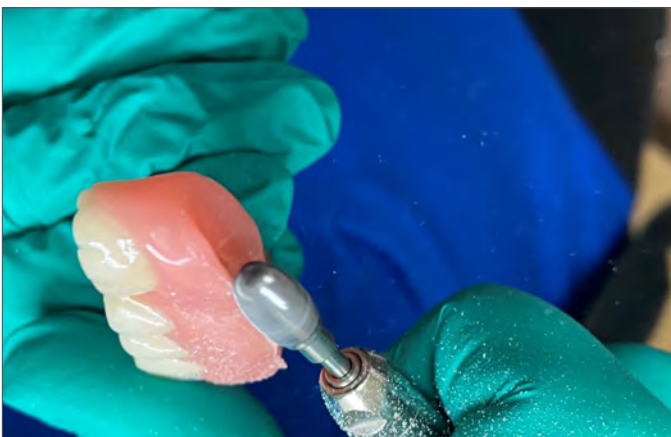
Clean the access holes and the internal aspect of the prosthesis around the caps and adjust with additional resin as needed.

IMPORTANT: Be careful to leave 1mm of the cap exposed. There should be no acrylic inside the caps!

Fill voids as necessary.



Cure per the manufacturer's instructions.



Remove the prosthesis from the oral cavity for finishing and polishing. Adjust the horizontal and vertical aspects of the flange to meet the esthetic requirements of the patient.

Dentsply Sirona | 800-243-1942 | dentsplysirona.com
DP-0000627 Rev 03/23

THE DENTAL
SOLUTIONS
COMPANY™

